

## FlowSpace<sup>®</sup> Workflow Developer v. 3.2

FlowSpace is the fastest, easiest way to automate repetitive tasks on your desktop and across your entire workgroup or department. FlowSpace enables you to graphically develop, debug, and deploy workflow automations to

- Combine functionality from desktop applications using a powerful drag-and-drop graphical editor
- Route documents, coordinate reviews, survey users, and automate critical procedures
- Create *workflow-enabled* applications that enable domain experts to define and modify business logic

It's easy to get started. Just download your *free* Personal Edition, run the installer, and within minutes it's ready to use. It's also easy to upgrade when you're ready to deploy FlowSpace to your workgroup or your entire department.

### Features and Benefits

FlowSpace provides you with these advanced features and benefits for process automation.

#### *Simple Graphical Development*

Creating workflows is a snap for both end-users and developers with the simple, integrated graphical development environment. Just drag and drop nodes from the palette, connect them to specify your workflow, and configure their properties. Your workflow is ready to run immediately.

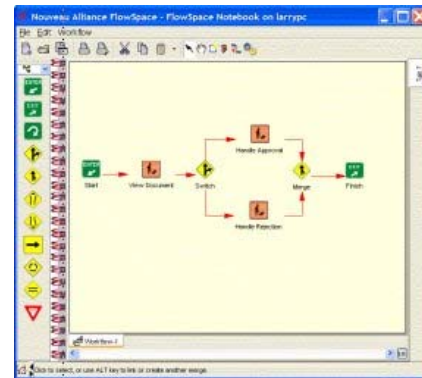
#### *Ready-to-Use Components*

FlowSpace features pre-defined workflow nodes and activities that you can extend using Java or over a dozen scripting languages including VBScript on Microsoft Windows and AppleScript on Mac OS X.

#### *Advanced Workflow Capabilities*

FlowSpace includes advanced workflow capabilities for the most demanding automation tasks:

- conditional branching
- parallel execution
- subworkflows
- iteration and looping
- named entry points
- exception handling
- mobile execution
- breakpoint processing
- pause/resume
- single-stepping
- RDBMS access
- email and messaging
- file and document access
- run external commands



#### *Remote Debugging and Monitoring*

With FlowSpace you can debug and monitor workflows as they are running. Stepping over nodes and activities, stepping into sub-workflows, and examining values during execution are all simple to do. You can also open, debug, and modify remotely running workflows, enabling you to quickly find and fix problems during and after deployment

#### *Real-time Collaboration*

FlowSpace is the first workflow development system that enables people in different parts of an organization to collaboratively develop, share, and debug workflows in real-time, anywhere, any time.

#### *Advanced Deployment Options*

Workflows you build in FlowSpace can run on any Nouveau Alliance server in your network with no additional deployment. FlowSpace also provides advanced deployment options for automatically generating Java source code, and for exporting and importing workflow definitions in industry standard XML format.

#### *Simplified Administration*

FlowSpace is simple to administer through installed desktop shortcuts and web pages. Built on the Nouveau Alliance collaboration platform, services such as persistence, databases, distribution, collaboration, peer-to-peer (P2P), security and others are managed automatically for your workflows.

#### *Complete Documentation*

FlowSpace includes complete documentation, including a manual with extensive examples, usage, and reference material, a security administration guide, and complete on-line API documentation.

## New in Version 3.2

### *Professional and Department Editions*

*Professional Edition* provides workgroup P2P sharing and execution of workflows and real-time collaboration. *Department Edition* is an economical self-hosted version that supports users department-wide with no per-user installation.

### *Universal Scripting Framework*

Create new workflow activities in Java or in popular scripting languages such as JavaScript, Ruby, Perl, Python, Tcl, Scheme. Automate your desktop using VBScript in Microsoft Windows and AppleScript in Mac OS X.

### *Workflow Enabled Servlets*

Create web applications graphically with FlowSpace. Use *Workflow Servlet* to create servlet logic using workflows. Enables domain experts to define and modify business logic without extensive knowledge of web programming.

### *Integrated DerbyDB RDBMS*

Store and retrieve relational data from this full-featured, fully integrated RDBMS at no extra cost. Configure data sources external to workflows. Allows easy integration with other commercial and open-source database products.

### *Launch from Web Browser with WebStart*

Launch FlowSpace Developer from your web browser using WebStart. Just click the application icon or convenient desktop shortcut. Department Edition users can now launch FlowSpace from their desktops with no installation required!

### *Run Workflow Command Line Tool*

Run or resume workflows from the command line using the *runworkflow* tool. Now run workflows from command scripts, or from desktop tools such as *iCal* on Mac OS X, *Task Scheduler* on Microsoft Windows, or *cron* on Unix.

### *Faster Startup, Improved Performance*

FlowSpace now starts 5-10 times faster than previous versions and relaunches nearly instantly. Perform tasks faster using the new Finder menu on Mac OS X and taskbar menu on other platforms.

### *Sample Workflow Applications*

Includes complete workflow applications, including detailed whitepapers that show how they are built, and ready-to-run example templates.

## Requirements

FlowSpace Workflow Developer runs within the Nouveau Alliance® Collaboration Server, and supports a wide variety of hardware, operating systems, databases, and directory services.

### *Dependencies*

#### Required Software

- Java 2 Platform Standard Edition v. 1.5 SDK (or higher)
- Nouveau Alliance Collaboration Server v. 3.2 (or higher)
- Nouveau Alliance Workflow Automation Service v. 3.2 (or higher)

#### Optional Software

- Nouveau Alliance Content Management Service v. 3.2 (or higher)

### *Platforms Supported*

- Windows 2000/XP/Vista
- Windows Server 2003 for x86 or IA64
- MacOS 10.3 for PPC or x86 (or higher)
- Solaris 9 for for Sparc or x86 (or higher)
- HP-UX 11 for PA-RISC or IA64 (or higher)
- Redhat Fedora Core 4 for x86 (or higher)
- Redhat Linux Release 9 for x86 (or higher)
- Redhat Ent Linux ES 4.0 for IA64 (or higher)
- Linspire 6 for x86 (or higher)
- Ubuntu 7 for x86 (or higher)
- SuSE Linux 9.0 for x86 (or higher)
- SuSE Enterprise Server 9 for IA64 (or higher)

### *Supported Databases*

- Oracle
- DB2
- SQL Server
- MySQL
- DerbyDB
- Other JDBC compliant databases

### *Supported Naming and Directory Services*

- LDAP
- NIS
- Microsoft Directory Service
- Nouveau Alliance Naming and Directory Service v. 3.2 (or higher)
- Other JNDI supported directory services

## To Learn More

To learn more about the benefits of FlowSpace, and how it can be integrated with your applications, contact Nouveau Systems.